

Tourism Newsletter

Pike County Ohio

VOLUME 1, ISSUE 1

SUMMER 2011

CONTACT US:
PIKETRAVEL@YAHOO.COM
WWW.PIKETRAVEL.COM
740.947.9650

Pike County Convention & Visitors Bureau is a not for profit 501(c)6 funded by lodging tax levied on the traveling public. Our main function is to promote Pike County as a travel destination.

Premier Edition 1

History of the Bureau 1

Trails in Pike County 2

Upcoming Events in Pike County 3

Civil War - Ancient Monuments 3

Be a Tourist in your own backyard! From the writer's perspective 4

Premier Edition Newsletter

Welcome to our premier edition of the Pike County Convention and Visitors Bureau's newsletter publication. The Quarterly issue will bring information to you about the sites and sounds, fresh endeavors, old friends and new "hotspots" in Pike County. Whether the history of place peaks your interest or you are seeking new encounters of another kind, we are certain you will find fun and adventurous treks into Pike County. For those of you who would think there is "nothing to do" or anything that would attract your attention, stay tuned! You'll enjoy stories of people, places and things to do that you probably didn't know existed. So roll up your jeans, put on your hiking boots, we're going trekking.

DID YOU KNOW that there are two trails that travel through Pike County which were featured in *National Geographic Traveler* magazine in 2009? They are the Pike's Patches Trail and the Appalachian Adventure Trail.

Cave Lake in Western Pike County



For additional information go to www.pikettravel.com

Did you know the elusive and rare Frost Cave Isopod makes its home in Pike County?

Cave Lake in western Pike County boasts a 42 acre lake and 700 acres of wooded property, playing host to more than 150 species of birds, 160 species of trees and shrubs, and 360 species of plant life. The park's ecological treasure, a large cave, is a habitat to bats, the rare *Sullivantia sullivanii* plant and the **Frost Cave Isopod**, a rare crustacean. The national office of **The Nature Conservancy** has labeled the 700 acres of Cave lake "an ecological gem".

History of the Bureau

The Pike County Convention and Visitors Bureau is a non profit entity primarily funded through a lodging (bed) tax enacted by a resolution of the Pike County Commissioners as authorized by the State Legislature. The Bureau opened its doors in 1997 in the Pike County Cham-

ber of Commerce building on St Rt 104 in Waverly. The Bureau remained at that location until late Summer of 2010 at which time the offices were moved to 126 W Second Street in downtown Waverly. The Bureau uses their funding to market and

brand our county as a unique tourism and business destination through a variety of economic development and tourism promotion programs.

Suggestions and/or ideas for future publications please email to:
linda_basye@yahoo.com or call the Bureau at 740.947.9650

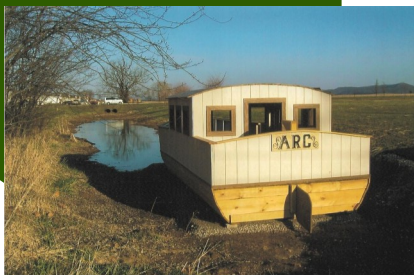
The Clothesline of Quilts Trail



The Quilt Trail Gathering was held at the Red Barn Conf. Ctr. May 13, 14 Winchester Ohio.

Nestled in the foothills of the Appalachias this region is far from ordinary. Your next adventure starts here!!

Climb on the ARC canal boat replica at Bristol Village in Waverly Ohio



In an event celebrating a decade since the first quilt square was painted on an old tobacco barn in Adams County Ohio, the *Quilt Trail Gathering* was held at the Red Barn Conference Center in Winchester Ohio. The idea of painting a quilt square on a barn on their Adams County farm was conceived by

Donna Sue Groves in honor of her mother Nina Maxine Groves, a fifth generation quilter. Groves dreamed of creating an imaginary Clothesline of Quilts interconnecting barns with quilt squares across America. Today the phenomenon has swept across America with an estimated 3000 barns in thirty states and two Canada

Provinces, creating a colorful sampler that honors the Appalachian tradition.

Pike's Patches Quilt Trail is a part of the Ohio Clothesline of Quilts Trail and was featured in *National Geographic Traveler* magazine in 2009. **For information on Pike's Trail contact the Bureau at 740.947.9650**

The Appalachian Adventure Trail

Created through a partnership between the Appalachian Regional Commission, **Pike County** and 5 other Ohio counties, this trail meanders across southern Ohio enticing you to experience the wooded ridge tops and winding river valleys, stunning sandstone outcroppings and diverse ecosystems. You'll hike the

state parks, discover pre-historic Native American inscriptions and earthworks, and learn about our region's industrious past which impacted our Nation. You may visit some of the Trail's premier art galleries and old opera houses, or take a musical adventure at Fur Peace Ranch operated by Jorma Kaukonen, foun-

der of Jefferson Airplane and Hot Tuna. Tap your toes and dance as music fills the air at one of the many venues along the Appalachian Adventure Trail!

The Appalachian Adventure Trail was featured in *National Geographic Traveler* magazine in 2009.

For information on Pike's Trail contact the Bureau at 740.947.9650

Ohio & Erie Canal Trail

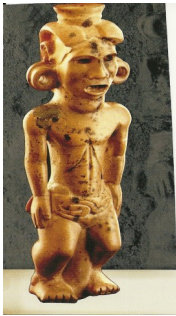
The Ohio & Erie Canal, hand dug mostly by immigrants from Europe, opened in 1832 and connected Cleveland with Portsmouth. This new transportation system allowed farmers to ship products cheaper to markets in New York and the east coast. The history of the Canal can

be relived by visiting the Ohio & Erie Canal Trail at Bristol Village. Starting with a 1/3 scale size canal boat named the ARC, take a self guided tour with markers along the trail testing your knowledge of the history of the Canal. The Trail ends at the Canal Pavilion which sits on the banks of a remnant of the Canal. The trail

is a joint venture of Bristol Village, the **Visitors Bureau**, Pike County Rotary Club, Waverly Parks & Recreation Dept., and the Pike Co. Commissioners. Major donors are First National Bank, USEC, Appalachian Regional Commission, and Ohio Governor's Office of Appalachia. The canal boat, the ARC, was built by Pike County CTC students carpentry class.

See the canal model display at the Pike Heritage Museum, Waverly, Ohio.

Ancient Monuments



Ancient effigy found in one of the Mounds

Thousands of years ago Native Ohio-

ans populated the landscape with mounds and massive earthworks. Southern Ohio is a living history lesson with evidence of these complex, interconnected structures that

held great practical and ceremonial importance for the creators. This project, a collaboration between the Ohio Historical Society (OHS) Hopewell Cultural Center, and the Ohio Valley Regional Development Commission (OVRDC), creates a new way to discover history as it features **10 sites** that are considered by experts to be among the most significant Native American sites in the United States. Experience these

ancient wonders through a self-guided tour by calling the OHS for information on ten sites in southern Ohio (800.686.6124) or call the OVRDC for local sites (800.223.7491).

Excerpts from *Earthworks of Southern Ohio Ancient Monuments of the Eastern Woodlands* created through a partnership of ODOD, the National Park Service and Mills James Productions.

A child is a person who is going to carry on what you have started. He is going to sit where you are sitting, and when you are gone, attend to those things which you think are important. You may adopt all of the policies you please, but how they are carried out depends on him. He will assume control of your cities, states, and nations. He is going to move in and take over your churches, schools, universities, and corporations. All your books are going to be judged, praised or condemned by him. The fate of humanity is in his hands."

A. Lincoln

Civil War

Troop movements and battles blazed across the North and South during the five year conflict affecting all, white, black, free and enslaved, confederate and union. The Appalachians was a major passageway between the North and South campaigns, facing constant invasion by troops. Residents confronted divided loyalties, persecution and suffering, famine and loss. But out of adversity came resolve, fortitude, a belief in honor, and a

The Home Front

new country emerged from the ashes of the worst war in American history.

The 150 year anniversary of this historic conflict will be chronicled in celebration and a recognition depicting a place and people transformed by the actions of citizens longing for freedom and equality for all men.

Pike County will be joining this celebration along with other Appa-

lachian States from New York to Mississippi in telling the story of our participation in the war. Go to www.visitappalachia.com to read the stories from personal accounts of hardship and triumph, loss and sacrifice and the joy and relief of those most affected. **Watch for Pike County's planned events.**

Excerpts from *Civil War The Home Front—Appalachia, and American Heritage.*

Upcoming Events

June 3,4 -Elm Grove Days, Elm Grove Ohio.

June 10, 11– Street Fest 6 in streets of Waverly Ohio.

June 11 and every other Saturday– Summer Movies at Bristol Park in Waverly Ohio. Free ,family friendly movies, bring lawn chairs and picnic baskets.

June 14-Stained Glass Demonstration, Bristol Village, Waverly Ohio.

June 17,18– The Case of Hattie Shepherd-historical play by Delmar Burkett at Canal Church of Christ, Waverly Ohio.

June 25– Appalachian Music Festival at Pike Lake State park, Bainbridge Ohio (Pike County).

July 2-Family Cookout Independence Day at Pike Lake State Park in Bainbridge Ohio (Pike County).

July 2-Dailyville 4th of July Cele-

bration, Dailyville ball park, St Rt 220, Lake White area.

July 4 -Wingding and Fireworks at the new Piketon High School, , Piketon Ohio.

July 16-Railroad Days Rendezvous at Pike Lake State Park in Bainbridge Ohio (Pike County)

July 30-August 6-Pike County Fair, fairgrounds in Piketon Ohio.

For information on any events, call the Visitors Bureau at 740.947.9650 or go to www.pikettravel.com



**Pike County
Convention & Visitors Bureau
126 W Second Street
Waverly Ohio 45690**

**Contact us: piketrael@yahoo.com
www.piketrael.com
740.947.9650**

Our mission supports the many services that make up our local economy; retail, manufacturing, the service sector, and the general welfare of our county. We advertise, promote, market and lobby when required, to sustain and improve the economic health of the area, building upon our historic base with an eye to the future.

Please think before you spend your dollars outside Pike County. Buying local improves the lives of all who work and live here!

Be a Tourist: A Drive with Otto Graham

Recently this writer's Grandson drove up from Florida to visit along with his brindle boxer, Otto, named after the great Otto Graham who played football for his favorite team, the Cleveland Browns. While on one of the unusual 70+ degree days in March, I loaded my grandson and Otto into the car with the enticement that I was taking them to lunch (I was buying!). As we traveled along the back roads of western Pike County and as time wore on, he was beginning to wonder where in the world I was taking him. I told him I was taking him to get a sandwich that he would not believe He was a little skeptical that I would possibly have such a lengthy drive just for a sandwich. At last we arrived and I pulled into the parking lot of the Country Crust Bakery in Cynthiana Ohio,

owned by a local Mennonite family. We left Otto in the car as he would very probably have run up my bill considerably before we could stop him! The smell of freshly baked apple pie, cherry turnovers and fresh baked bread wafted out the door as we opened it to enter. I guided him to the counter and filled out my order



for freshly sliced turkey, provolone, lettuce, tomato and mayo on a wheat pretzel bun (my favorite). He chose the same on plain bread, (no adventure in him!) not forgetting to pick up our free drink. We took our sandwiches and a few other treats and meandered out to the picnic tables to enjoy our bounty. After about the third bite, he remarked that this really was a sandwich he couldn't believe! He consumed the whole sandwich in short order while I wrapped half of mine to take home, too much for me to eat all in one sitting. Retracing our trail back home, feeling full and happy, the only one who felt slighted was Otto Graham!

Country Crust Bakery is on State Route 41 South just a few miles from the US 50 intersection in Bainbridge Ohio. (Pike County) Call for info. 740.947.9650